



OCTOBER 2018

mayfair times

VIVIENNE WESTWOOD'S DESERT ISLAND BOOKS
in celebration of the Mayfair & St James's Literary Festival
PLUS: Simon Callow and PAD London



**UNTIL DECEMBER 15
MAZZOLENI**

Albemarle Street gallery Mazzoleni is presenting an exhibition of works by Michelangelo Pistoletto spanning from 1958 to 2012 – featuring the Italian artist's early figurative oils on canvas, charcoal sketches, acrylics, wood, bronze and glass – as well as Pistoletto's signature 'mirror works'.

A key player in the radical late-60s and 70s Italian movement, Arte Povera, the artist's most significant pieces employed reflective materials that brought the viewer into the works – such as 1971's *Dono di Mercurio allo Specchio (Mercury's Gift to the Mirror)*, which asks the viewer to enter into a visual dialogue by standing alongside Venus – the most beautiful figure in the classical world – while both appear in a mirror.

Origins And Consequences runs until December 15.
27 Albemarle Street

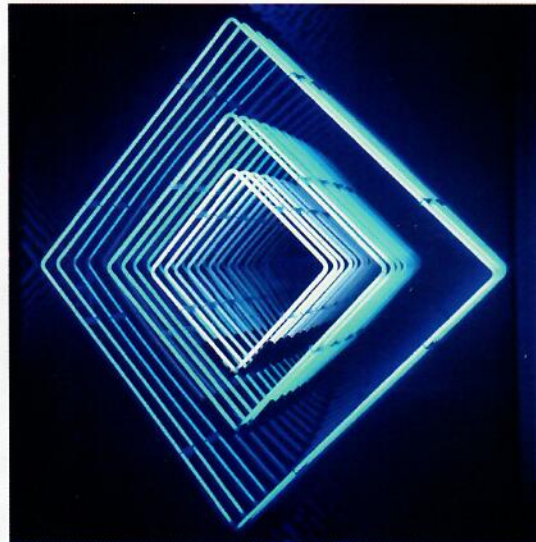
HOFA PORTFOLIO AVAILABLE IN CRYPTOCURRENCY

The House of Fine Art (HOFA Gallery) has partnered with cryptocurrency platform Uphold and is making every piece of its £115 million art portfolio available to purchase using cryptocurrency. This venture is the first time a collection of such worth has been made available through digital currencies, which are increasingly important in terms of financial investment.

"At the moment, digital currencies are holding strong value, whilst GDP, Euros and Dollars are more volatile with the current political climate," says Elio D'Anna, founder of HOFA. "We believe that securing a rate in a digital currency against a physical asset such as art from HOFA's portfolio, which is a stable and appreciative asset growing in value yearly between 15-20 per cent, has proven to be a smart investment."

58 Maddox Street

Emmanuelle Rybojad, *Diamond – Shade of Blues*



Stephen Hermaphrodite
2014

**UNTIL NOVEMBER 2
KALLOS GALLERY**

Davies Street's Kallos Gallery is partnering with renowned sculptor and Royal Academician Stephen Cox for an exhibition that will display 15 of Cox's contemporary sculptures that employ ancient sculptural techniques – alongside antiquities from the Kallos collection.

Highlights include Cox's maquette of *Cycladic Gemini* – the full-scale version of which was most recently seen at the Royal Academy's latest Summer Exhibition; and the artist's *Figure in Deposition*, a piece carved in porphyry – an exceptionally hard and valuable stone used since the time of ancient Egypt. Important examples of stone sculptures including a Roman marble torso of Narcissus; an Early Dynastic Egyptian bowl; and an Achaemenid bird of prey carved from flint will also be exhibited until the show closes on November 2.

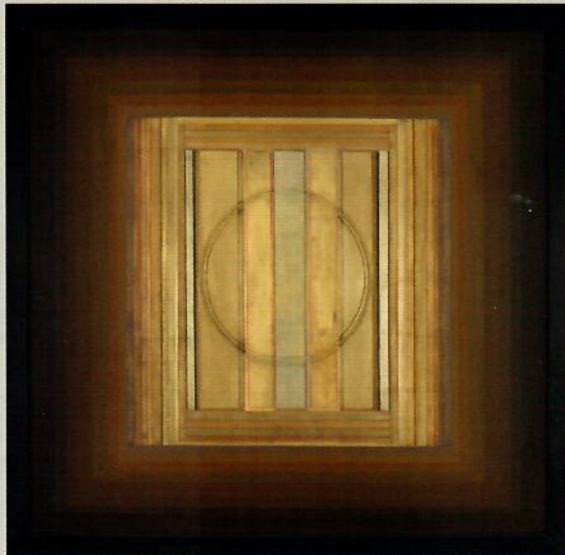
14-16 Davies Street

REDFERN GALLERY

Cork Street's Redfern Gallery is running two exhibitions by Paul Feiler and Catharine Armitage – painters who were also husband and wife – until October 27.

Elusive Space: A Centenary Retrospective features key works spanning various stages in his career, often inspired by Feiler and Armitage's Cornwall home, and showcases the artist's move from painterly abstraction to oils and mixed media. *The Way She Sees* It presents a series of paintings created over the past four years by Armitage, who still lives in Cornwall. Her new works consist of abstract shapes and organic and geometric forms.

20 Cork Street



Paul Feiler, *Zenicon XXVIII*, 2007
Courtesy: Paul Feiler Estate and the Redfern Gallery